

How to install Xcitium Client Security on Windows, Linux and Mac devices

Open Endpoint Manager > Click 'Devices' > 'Device Management'

- This article explains how to install Xcitium Client Security (CCS) on managed endpoints.
- CCS is the client that implements security on the endpoint. It includes antivirus, firewall, host intrusion prevention, and an automatic threat containment system.

Process in brief:

- Login to Xcitium
- Click 'Applications' > 'Endpoint Manager'
- Click 'Devices' > 'Device List' > 'Device Management'
- Select the target endpoints.
 - You can select and install on multiple devices at once, but they must all use the same operating system. E.g. all Windows or all MAC OS.
- Click the 'Install or Update Packages' button
- Select the packages you want to install and click 'Install'
- Endpoint Manager (EM) will push the installation package to the endpoints and install the application
- The endpoint will restart if so configured in installation options

Process in detail:

Use the following links to see instructions for each operating system:


- [Windows devices](#)
- [Linux devices](#)
- [Mac OS devices](#)

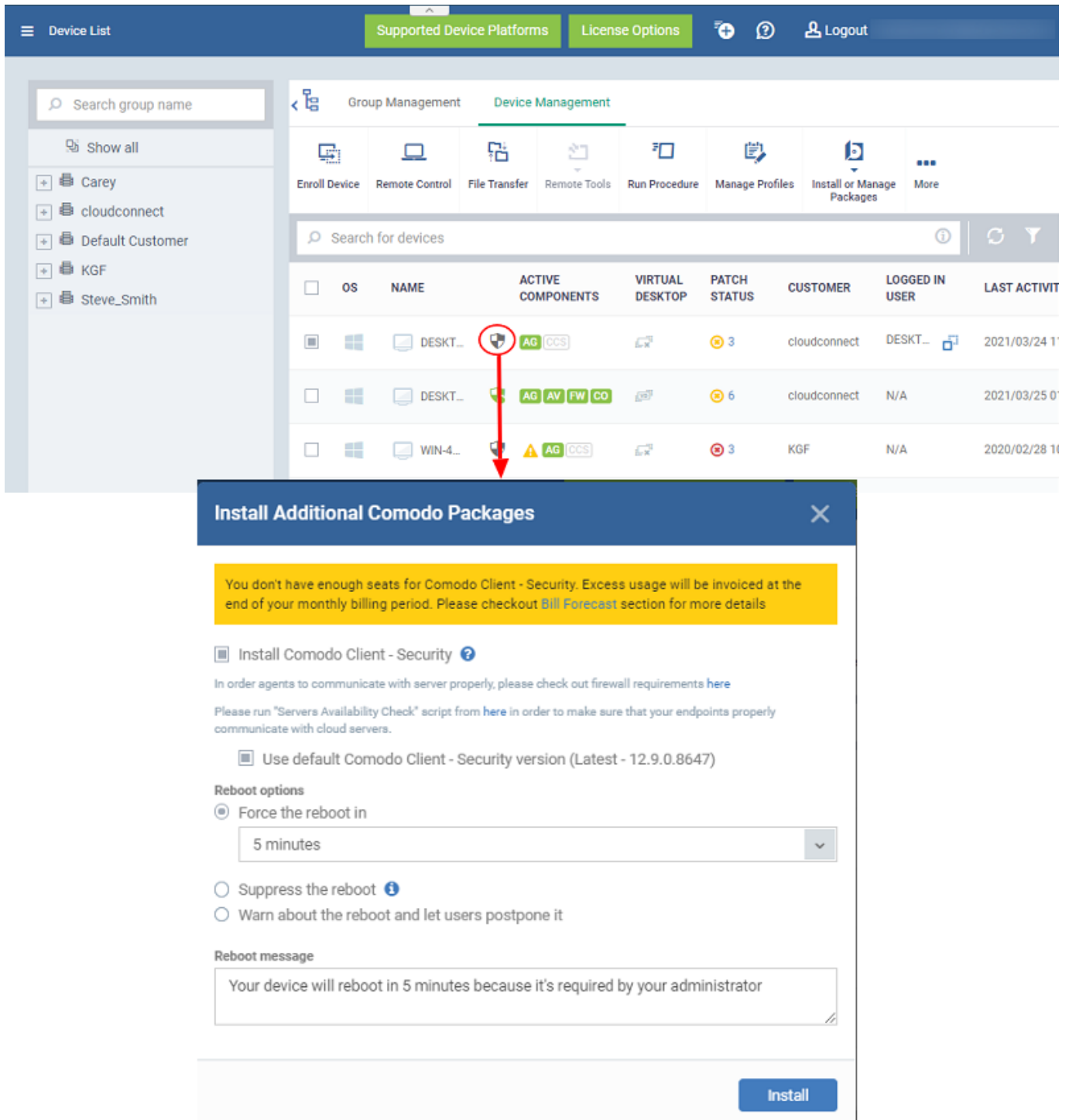
Windows Devices

- Login to Xcitium
- Click 'Applications' > 'Endpoint Manager'
- Click 'Devices' > 'Device List' > 'Device Management'
- There are two ways you can install CCS on the managed endpoint:
 - [Use the status icon](#)
 - [Click 'Install or Update Packages'](#)

Use the status icon

- A black shield is shown next to endpoints that do not have CCS

- Click the  icon to start the installation process:
- When you deploy the Xcitium Client Security agent to your endpoints a warning message appears, If you don't have enough Xcitium AEP seats indicating that the system will switch to postpaid for overuses.
- You will be able to verify our firewall requirements prior to installing Xcitium Customer - Security.
- Run the "Server Availability Check" script to ensure your endpoints are communicating properly with the cloud servers



The screenshot shows the Xcitium management console interface. At the top, there are navigation tabs for "Supported Device Platforms" and "License Options", along with a "Logout" button. The main area is divided into "Group Management" and "Device Management". Under "Device Management", there are several action buttons: "Enroll Device", "Remote Control", "File Transfer", "Remote Tools", "Run Procedure", "Manage Profiles", and "Install or Manage Packages". Below these buttons is a search bar for devices and a table listing devices.

OS	NAME	ACTIVE COMPONENTS	VIRTUAL DESKTOP	PATCH STATUS	CUSTOMER	LOGGED IN USER	LAST ACTIV
Windows	DESKT...	AG CCS		3	cloudconnect	DESKT...	2021/03/24 1'
Windows	DESKT...	AG AV FW CO		6	cloudconnect	N/A	2021/03/25 0'
Windows	WIN-4...	AG CCS		3	KGF	N/A	2020/02/28 11

An "Install Additional Comodo Packages" modal is open, displaying a warning: "You don't have enough seats for Comodo Client - Security. Excess usage will be invoiced at the end of your monthly billing period. Please checkout Bill Forecast section for more details". The modal includes options to "Install Comodo Client - Security", "Use default Comodo Client - Security version (Latest - 12.9.0.8647)", and "Reboot options". The "Reboot options" section has three radio buttons: "Force the reboot in" (selected), "Suppress the reboot", and "Warn about the reboot and let users postpone it". The "Force the reboot in" option is set to "5 minutes". There is also a "Reboot message" field with the text: "Your device will reboot in 5 minutes because it's required by your administrator". An "Install" button is at the bottom right of the modal.

- Choose your installation options and click 'Install'. [Click here](#) if you need explanations of the installation

options.

Use the 'Install or Update Packages' option

- Select your target devices
- Click the 'Install or Update Packages' button then select 'Install Additional Xcitium Packages':

The screenshot shows the Xcitium Device Management interface. On the left is a sidebar with a search bar and a list of groups. The main area displays a table of devices. A red circle highlights the 'Install or Manage Packages' button in the top navigation bar. A red arrow points from this button to a dropdown menu that is open, showing options like 'Install Additional Comodo Packages', 'Install Custom MSI/Packages', 'Install macOS Packages', 'Install Linux Packages', 'Update Additional Packages', and 'Uninstall Additional Packages'. Another red circle highlights a device in the table, and a red arrow points from it to a modal window titled 'Install Additional Comodo Packages'. This modal window contains a checkbox for 'Install Comodo Client - Security', a section for 'Reboot options' with radio buttons for 'Force the reboot in' (set to 5 minutes), 'Suppress the reboot', and 'Warn about the reboot and let users postpone it', and a text area for 'Reboot message' containing the text: 'Your device will reboot in 5 minutes because it's required by your administrator'. An 'Install' button is at the bottom right of the modal.



- Alternatively, click on the name of the device > select 'Install or Update Packages > 'Install Additional Xcitium Packages'.
- Select 'Install Xcitium Client – Security'
 - If EM is configured to allow users to choose the CCS version, the following settings appear:

Install Comodo Client - Security

In order agents to communicate with server properly, please check out firewall requirements [here](#)

Please run "Servers Availability Check" script from [here](#) in order to make sure that your endpoints properly communicate with cloud servers.

Use default Comodo Client - Security version (Latest - 12.9.0.8647) 

Version to install

Latest - 12.9.0.8647	16.09.2021	
----------------------	------------	---

This setting will allow you to select the specific version of security client that will be installed to the selected device.

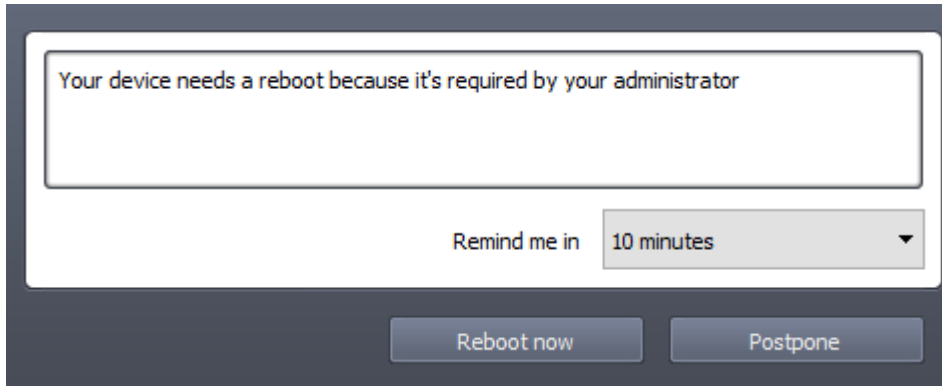
- **Use default Xcitium Client** – Install the CCS version which has been set as the default in Endpoint Manager.
- **Version to install** – Choose the version of CCS to install on the target device
 - See '[How to set the default version of the communication and security clients for Windows](#)' for more info on this setting.
- **Force the reboot in...** - Restart the end-point a certain period of time after installation. Choice of 5, 10, 15 or 30 minutes

The following message is shown on the device if you choose 'Force reboot':



The device will restart automatically when the time elapses.

- **Suppress the reboot**- Do not restart the machine after installation. CCS will only become fully functional after the device is restarted.
- **Warn about the reboot and let users postpone it** - Show an alert to the user which advises them that their computer needs to be restarted. You can enter a custom message for the user:

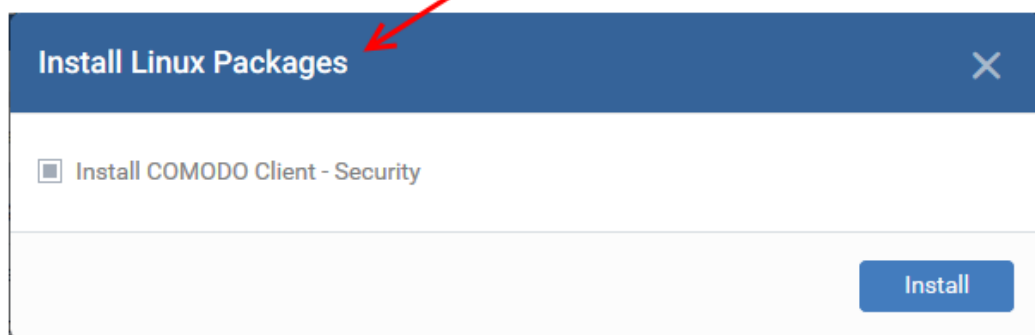
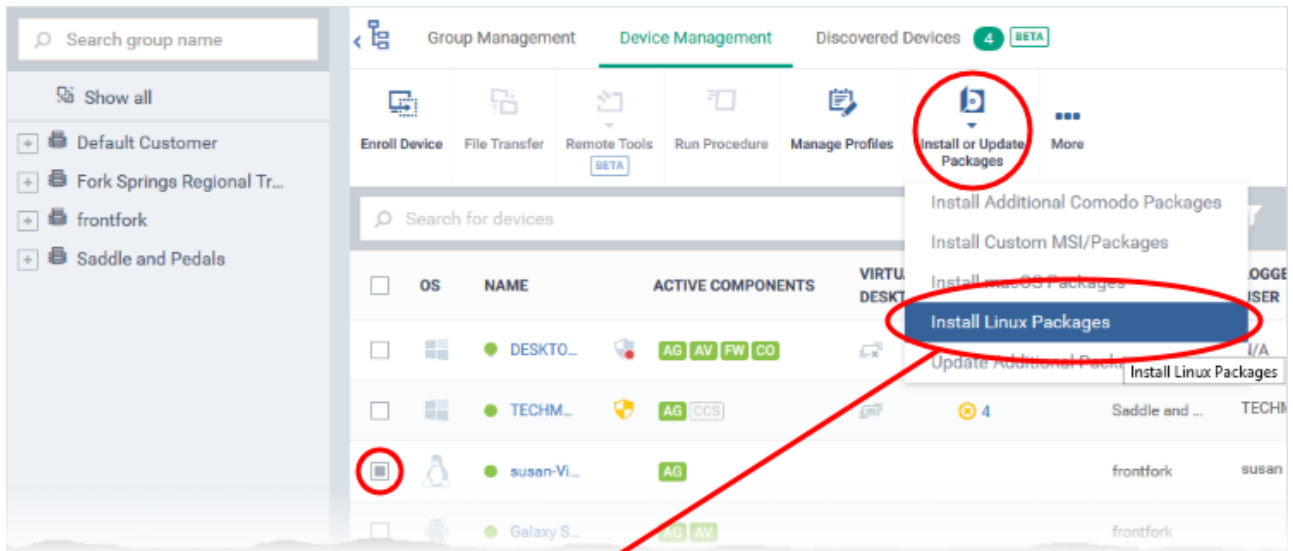


- Users can restart the endpoint immediately by clicking 'Reboot now', or defer it by picking a time in the 'Remind me in' drop-down and clicking 'Postpone'.
- Click 'Install'.

EM will remotely install CCS on to the device. The installation becomes effective after restarting of the device as configured.

Linux Devices:

- Login to Xcitium
- Click 'Applications' > 'Endpoint Manager'
- Click 'Devices' > 'Device List' > 'Device Management'
- Select the target Linux devices using the check-boxes on the left
- Click 'Install or Update Packages' from the options at the top
- Choose 'Install Linux Packages'.



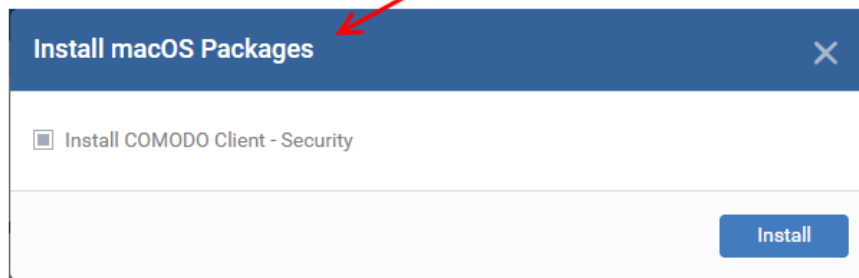
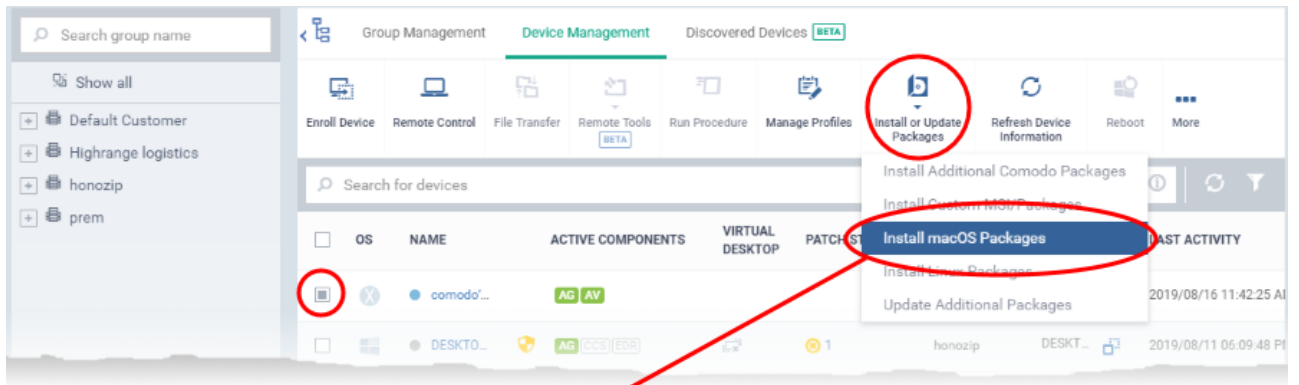
- Alternatively, click on the name of the device > select 'Install Linux Packages'.

- Choose 'Install Xcitium Client - Security'
- Click 'Install'

A command is sent to target endpoints to install CCS. The application will become effective immediately after installation.

Mac OS Devices

- Login to Xcitium
- Click 'Applications' > 'Endpoint Manager'
- Click 'Devices' > 'Device List' > 'Device Management'
- Select the target devices using the check-boxes on the left
- Click 'Install or Update Packages'
- Choose 'Install macOS Packages':



- Alternatively, click on the name of the device > select 'Install macOS Packages'.
- Choose 'Install Xcitium Client - Security'
- Click 'Install'

A command is sent to target endpoints to install CCS. The application will become effective immediately after installation.