

How to remotely install custom MSI / packages on Windows devices

Open Endpoint Manager > click 'Devices' > 'Device List' > select a target device > Click the 'Install or Manage Packages' button.

- Endpoint Manager console lets you remotely install third party applications from MSI packages on Windows devices by specifying the URLs of the packages
- You can also specify command line options for the installation and configure reboot options.

Remotely install third-party MSI packages

- Login to Xcitium
- Click 'Applications' > 'Endpoint Manager'
- Click 'Devices' > 'Device List'
- Click the 'Device Management' tab in the top menu
 - Select a company or a group to view just their devices
 - Or
 - Select 'Show all' to view every device in EM
- Select your target Windows devices using the check-boxes on the left
- Click 'Install or Manage Packages' > 'Install Custom MSI/Packages':

The screenshot shows the Endpoint Manager interface. On the left, the 'DEVICES' menu item is circled in red. The 'Device List' page is active, showing a search bar for group names and a list of groups: 'Default Customer', 'Fork Springs Regional Tr...', 'frontfork', and 'Saddle and Pedals'. The 'Device Management' tab is circled in red. Below the tabs, there are icons for 'Enroll Device', 'Remote Control', 'File Transfer', 'Remote Tools', 'Run Procedure', and 'Manage Profiles'. The 'Install or Manage Packages' button is circled in red, and its dropdown menu is open, showing 'Install Custom MSI/Packages' as the selected option. The main area displays a table of devices with columns for OS, Name, Active Components, Virtual Desktop, and Patch Status.

OS	NAME	ACTIVE COMPONENTS	VIRTUAL DESKTOP	PATCH STATUS
	elaine-L...	AG AV		
	TECH...	AG CCS		1
	TechElf	AG AV FW CO		5
	John A...	AG AV		

- Alternatively, click on the name of the device > select 'Install or Manage Packages' > Install Custom MSI/Packages'

The 'Install Custom MSI/Packages' dialog appears:

Install Custom MSI/Packages

Custom MSI

MSI/Package URL *

example: `https://yourdomain.com/downloads/app.msi`

Command-line options

Read more about command-line option

Reboot options

Force the reboot in

5 minutes

Suppress the reboot ⓘ

Warn about the reboot and let users postpone it

Reboot message

Your device will reboot in 5 minutes because it's required by your administrator

Please check the status for the devices are not in the maintenance window

Total number of devices outside of maintenance window 1

Number of devices blocked by maintenance window settings 0

Number of devices warned by maintenance window settings 1

Skip devices warned by maintenance windows settings

In order to check maintenance window status, go to related profile maintenance window section

Install

- **MSI/Package URL** - enter the location of the installer. Make sure it is from a https site. For example, `https://www.hass.de/files/nodes/story/45/npp.6.8.4.installer.msi`
- **Command-line Options** - Enter any required installation switches (optional).
 - You need only enter the command here. E.g. `/L` or `/quiet`
 - Click the 'Read more' link to read more about command-line options.
- Choose the reboot option you prefer:
 - **'Force the reboot in...'** - restart the end-point a certain period of time after installation. Choice of 5, 10, 15 or 30 minutes

The following message will be displayed on the device:



You're about to be signed out

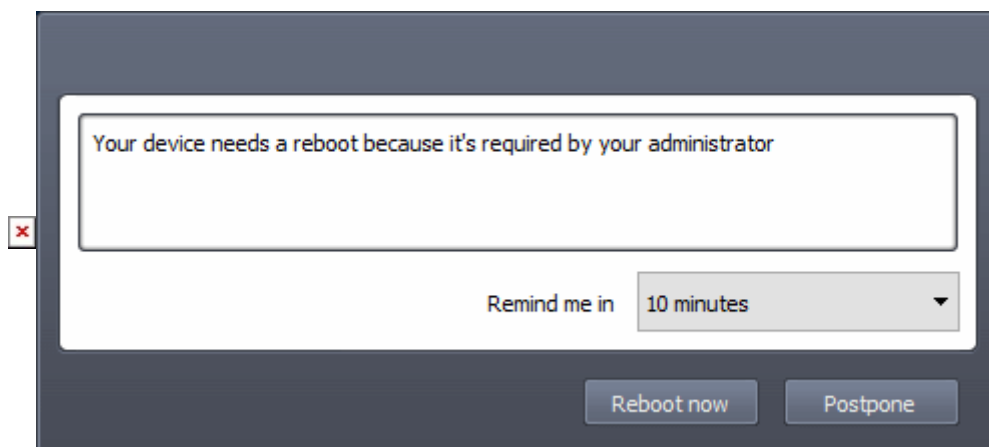
Windows will shut down in 2 minutes.

Shutdown will start on Tuesday, October 4, 2016 1:21:46 AM.

Close

The device will be restarted automatically when the time period elapses.

- **'Suppress the reboot'** - Do not restart the machine after installation. CCS will only become fully functional after the device is restarted.
- **'Warn about the reboot and let users postpone it'** - Show an alert to the user which advises them that their computer needs to be restarted. You can enter a custom message which is shown to the user:



- **Maintenance window status** - Details of any maintenance windows in the device's profile.
 - **Total number of devices outside of maintenance window** - The number of devices that are not part of a maintenance window. The installation can run on these devices.
 - **Number of devices blocked by maintenance windows settings** - The number of devices on which you cannot run the installation because the admin has blocked installs outside of maintenance window.
 - **Number of devices warned by maintenance window settings** - The number of devices that are part of a maintenance window and have warnings enabled. You can still install on these devices.
 - **Skip devices warned by maintenance windows settings** - A maintenance window is a time-slot reserved for running important tasks on target devices. Admins can enable a warning if somebody attempts an installation task outside of the window. This setting will skip those devices which have been added to a maintenance window with warnings enabled.

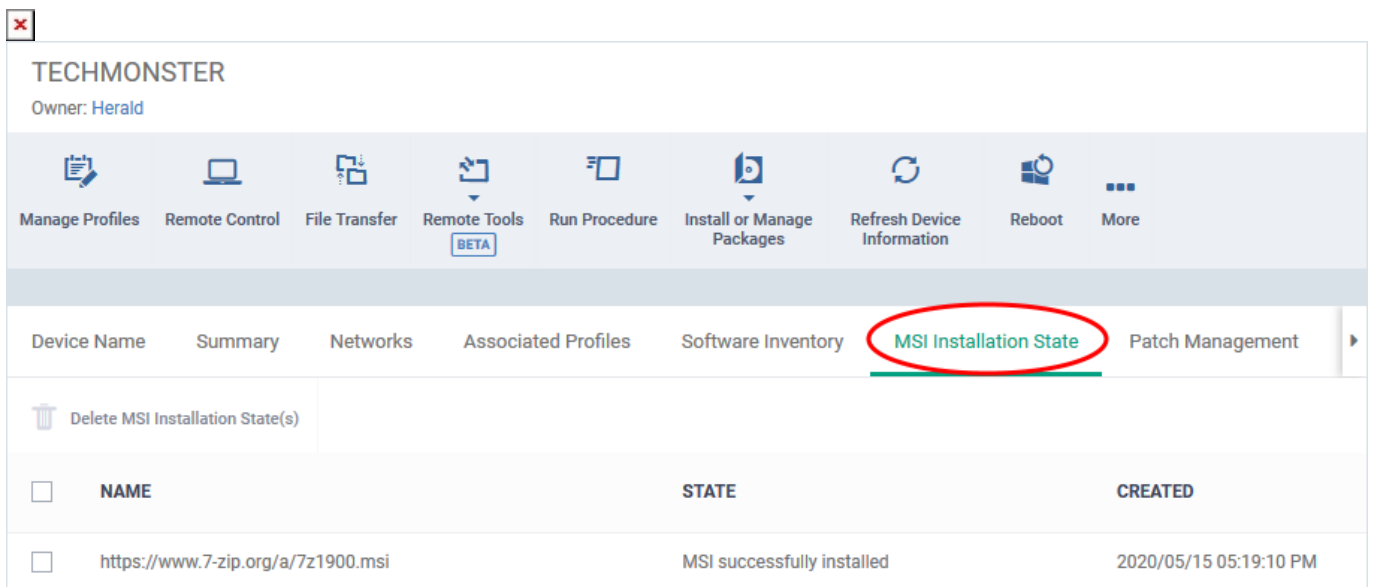
See [this wiki](#) if you want to read more on maintenance windows.

- Click 'Install'

An installation command is sent to the device.

You can view the installation progress in the device details interface:

- Click 'Devices' > 'Device List'
- Click the 'Device Management' tab in the top menu
 - Select a company or a group to view just their devices
 - Or
 - Select 'Show all' to view every device in EM
- Click on the name of the device to open its device details interface
- Click 'MSI Installation State' tab



The screenshot shows the 'TECHMONSTER' device details interface. The owner is 'Herald'. A top navigation bar contains several icons: Manage Profiles, Remote Control, File Transfer, Remote Tools (marked BETA), Run Procedure, Install or Manage Packages, Refresh Device Information, Reboot, and More. Below this is a tabbed interface with tabs for Device Name, Summary, Networks, Associated Profiles, Software Inventory, MSI Installation State (highlighted with a red circle), and Patch Management. Under the MSI Installation State tab, there is a 'Delete MSI Installation State(s)' button and a table with the following data:

NAME	STATE	CREATED
<input type="checkbox"/> https://www.7-zip.org/a/7z1900.msi	MSI successfully installed	2020/05/15 05:19:10 PM

Further reading:

[How to install xcitium Client Security on Windows, Linux and Mac devices](#)

[How to remotely update EM clients on Windows devices](#)