

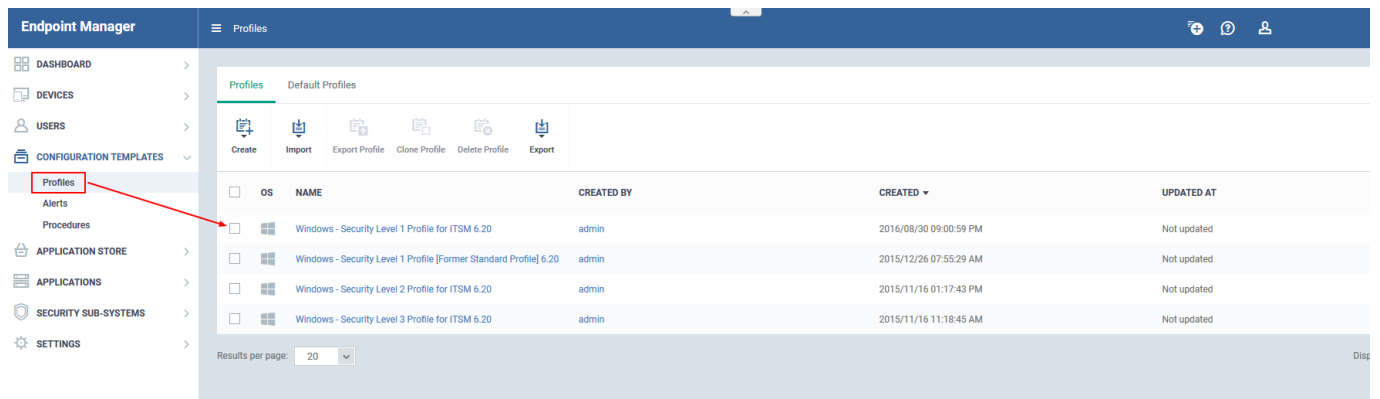
# How to use windows - security level profiles in Endpoint Manager

Endpoint Manager new profiles are optimized for security and usability. The profiles are based on three levels of security as follows:

- 'Windows - Security Level 1 Profile' (replaces 'Optimum Windows Profile')
- 'Windows - Security Level 1 Profile [Former Standard Profile]' (replaces 'Standard Windows' profile)
- 'Windows - Security Level 2 Profile' (replaces 'Hardened Windows Profile')
- 'Windows - Security Level 3 Profile' (new profile - max. security)

Step [1] : To view the profiles go to "Endpoint Manager"→ "CONFIGURATION TEMPLATES"→ "Profiles".

- More details on each profile are under the next screenshot.



OS	NAME	CREATED BY	CREATED	UPDATED AT
Windows	Windows - Security Level 1 Profile for ITSM 6.20	admin	2016/08/30 09:00:59 PM	Not updated
Windows	Windows - Security Level 1 Profile [Former Standard Profile] 6.20	admin	2015/12/26 07:55:29 AM	Not updated
Windows	Windows - Security Level 2 Profile for ITSM 6.20	admin	2015/11/16 01:17:43 PM	Not updated
Windows	Windows - Security Level 3 Profile for ITSM 6.20	admin	2015/11/16 11:18:45 AM	Not updated

## Windows - Security Level 1

- Replaces 'Optimum Windows Profile' with the following addition:
  - HIPS is enabled with 'Safe Mode' + 'Allow Request active'
- This is now the default profile unless you designate a new default

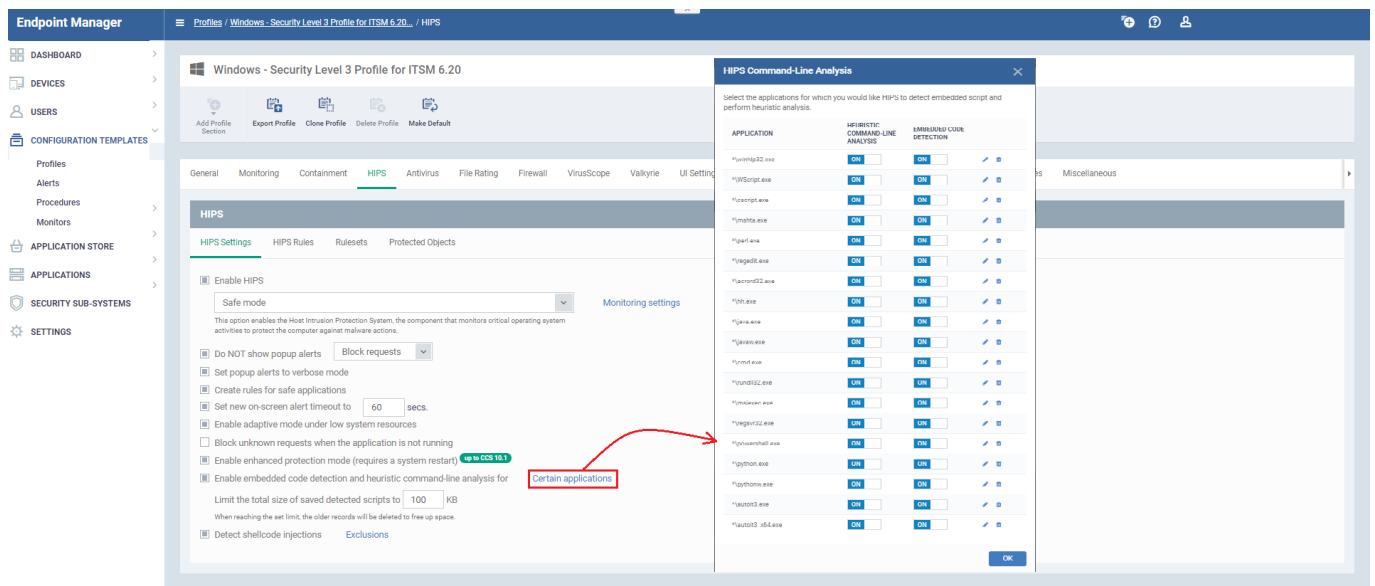
## Windows – Security Level 2

- Replaces 'Hardened Windows Profile' with the following additions:
  - HIPS is enabled with 'Safe Mode' + 'Block Request active'
  - Auto-containment is active with logging enabled

## Windows – Security Level 3

- New profile featuring highest security settings
- Same as 'Windows – Security Level 2' with the following additions:
  - Antivirus settings - 'Use Cloud While Scanning' is enabled by default in 'Full Scan'. The cloud database is the most up-to-date version of the virus database, so [antivirus scans](#) are more accurate. It also means CCS is capable of detecting zero-day malware even if the local database is out-of-date.

- HIPS settings – all interpreters are enabled under ‘Heuristic Command Line Analysis’ and ‘Embedded code detection:



## Windows – Security Level 1 [Former Standard Profile]

- Replaces 'Windows Standard' profile.
- Implements the same security settings as mentioned in 'Windows – Security Level 1'